



PEPPERMINT & LICORICE TEA

how does it feel like

(space installation design)

Grace Tsai

2018 Spring



THE TASTE OF THE TEA IS LIKE A BUTTERFLY COLLECTING NECTAR FROM FLOWERS.

AT THE BEGINNING, IT HAS NO TASTE BUT FLOWER SCENT. THEN, REFRESHNESS COMES INTO YOUR MOUTH, LIKE THE WIND URGES BUTTERFLY TO HURRY UP.

ONCE A BUTTERFLY FINISHES ITS JOB, SWEET-AFTERTASTE FLOWS INTO YOUR TONGUE.

TASTE ANALYSIS

TASTE

TRANSPARENT

LIGHT

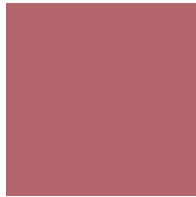
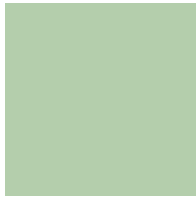
HERBAL

REFRESH

SWEET AFTERTASTE

FORM

DROPLET



LIGHT (NO TASTE)

REFRESH (COOL)

SWEET AFTERTASTE

FADE AWAY

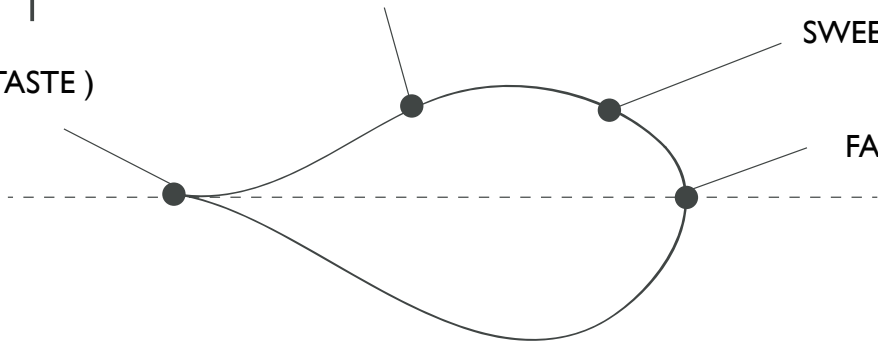


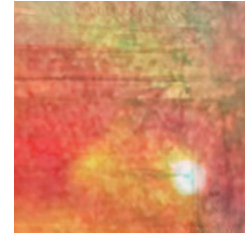


PHOTO COLLAGE

VISUAL TASTE ANALYSIS

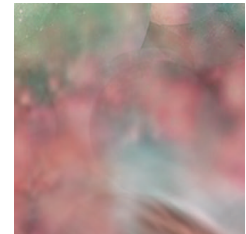
SHAPE

AN OVAL SHAPE
EXPRESSES HOW TASTE
BEING CHANGED
THROUGH TIME.



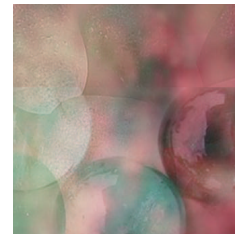
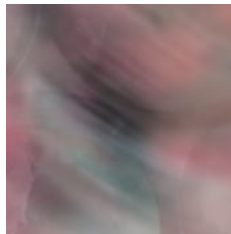
TEXTURE

GLASSY TEXTURE EXPRESSES THE REFRESHNESS
OF THE DRINK; WHILE MATTE SURFACE
REPRESENTS THE SWEETNESS.

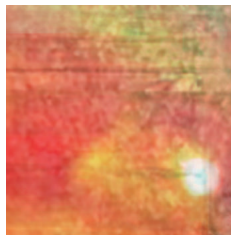


PATTERN

AMBIGUOUS PATTERNS EXPRESS THE CONFLICT
BETWEEN REFRESHNESS AND SWEETNESS



SPATIAL PLACEMENT



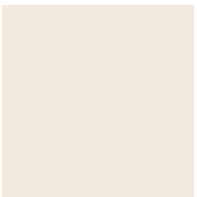
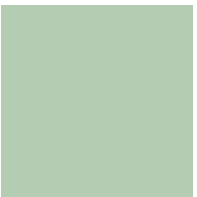
LIGHT





COLOR PALETTE

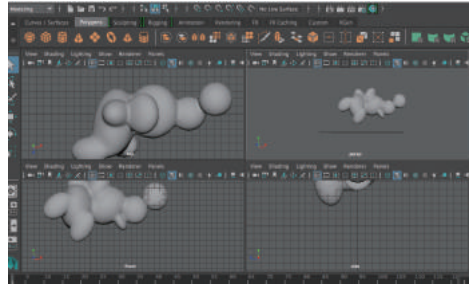
HOW DOES PEPPERMINT & LICORICE TEA FEEL LIKE ?



MATERIALS

DEVELOPMENT (SHAPE)

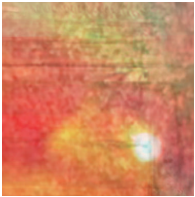




3D PRINTING



PAINTING



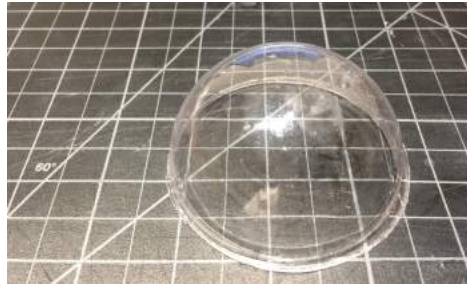
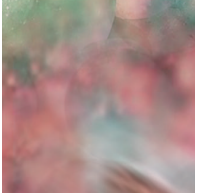
RESIN



ACRYLIC HEMISPHERE

DEVELOPMENT (TEXTURE)

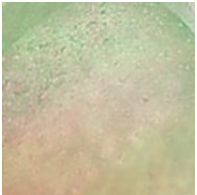




PLASTIC HEMISPHERE



COVERED BY FABRIC



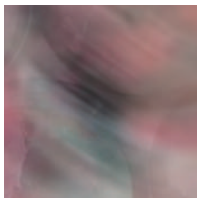
SPONGE PAINTING



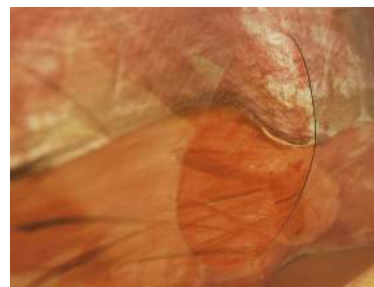
COVERED BY FABRIC

DEVELOPMENT (PATTERN, LIGHT)





PAINTING



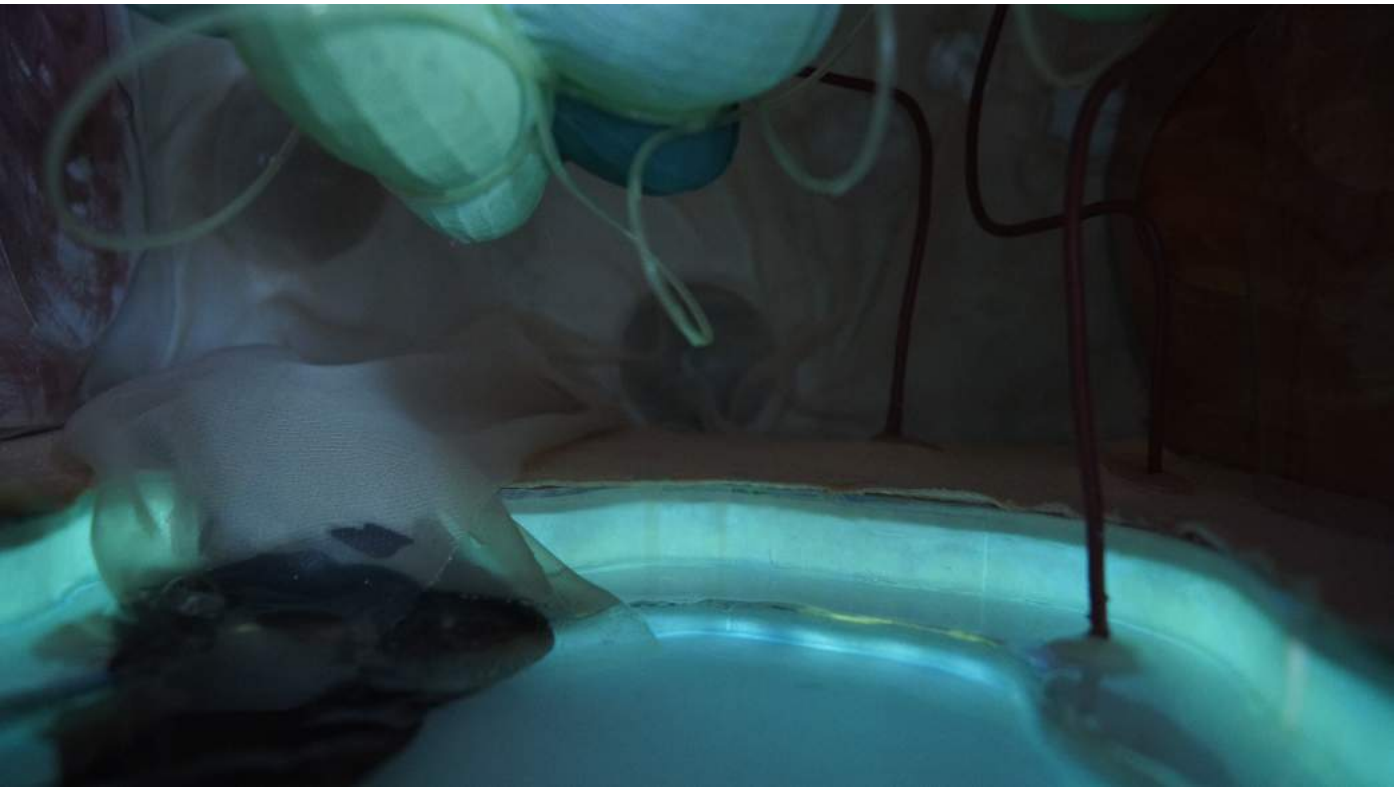
COVER WITH PLASTIC

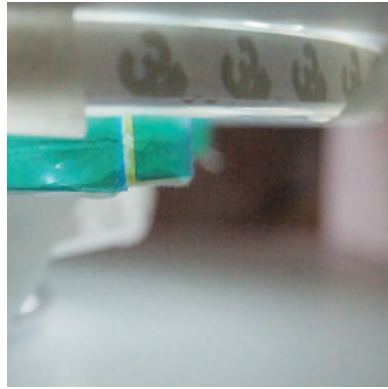


RESIN

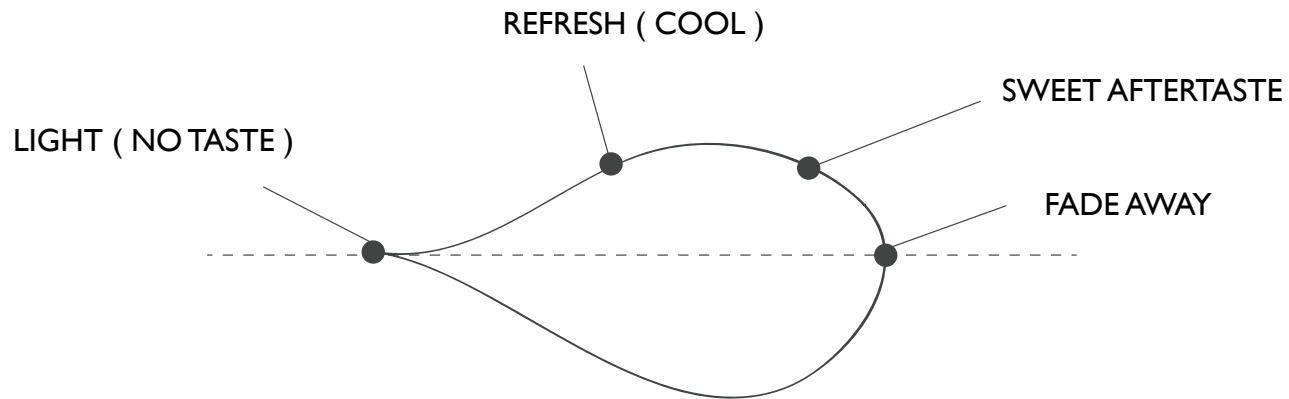


REFLECTION





EXPERIENCE TRANSITION





NO TASTE



REFRESH



SWEET
AFTERTASTE



PEPPERMINT & LICORICE TEA

how does it feel like

(space installation design)

April 28 - May 9

(everyday 9:00 - 17:00)

990 Washington Ave,
Brooklyn, NY 11225



+1-347-430-8587

designed by Grace Tsai

gracedong1213@gmail.com

